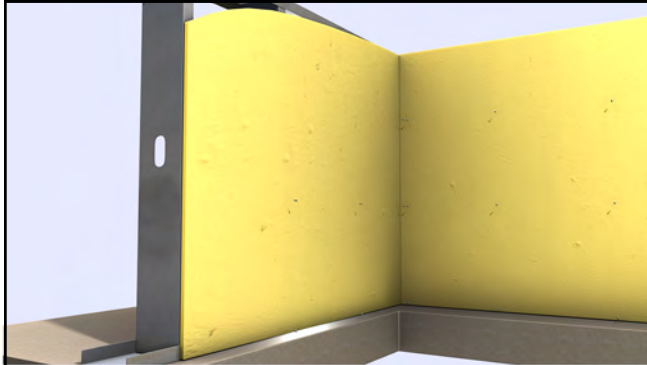
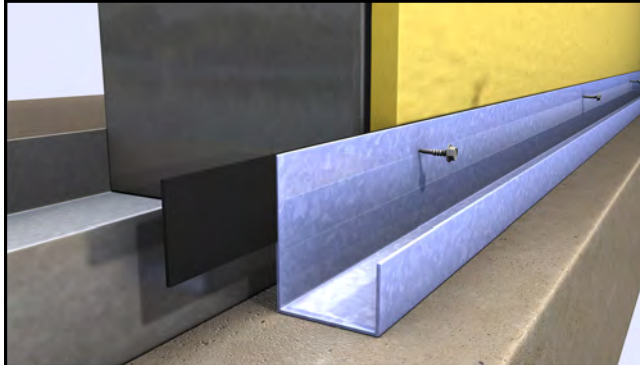


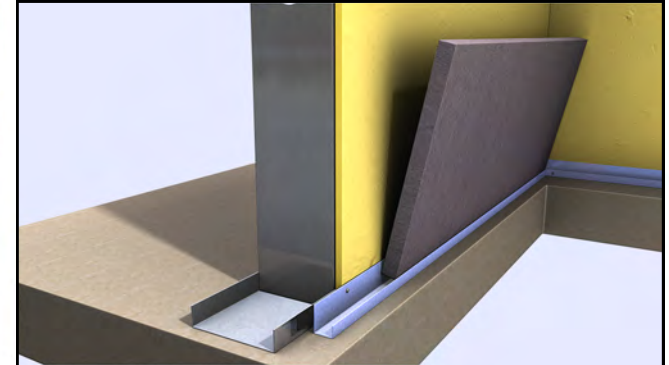
ThermaFast® Continuous Rigid Insulation Framing System Installation Instructions



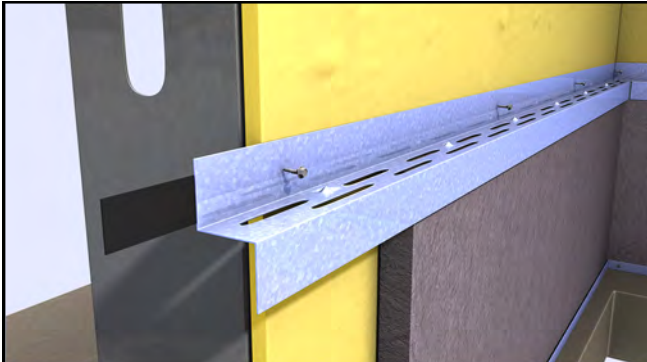
Install sheathing as designed.



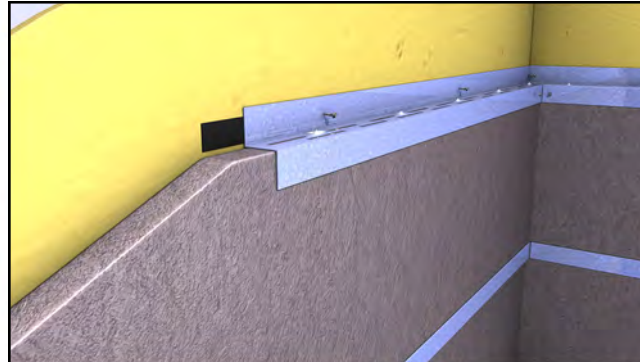
Install ThermaFast® J-Track at base of wall, connecting at each stud.



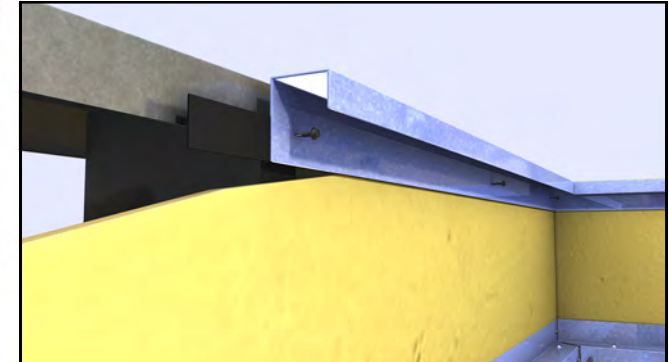
Insert 24" height rigid foam insulation.



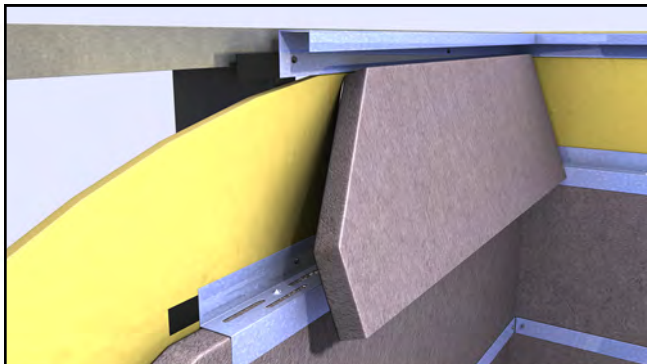
Install ThermaFast® Z-Track at top of 24" rigid foam insulation, connecting at each stud.



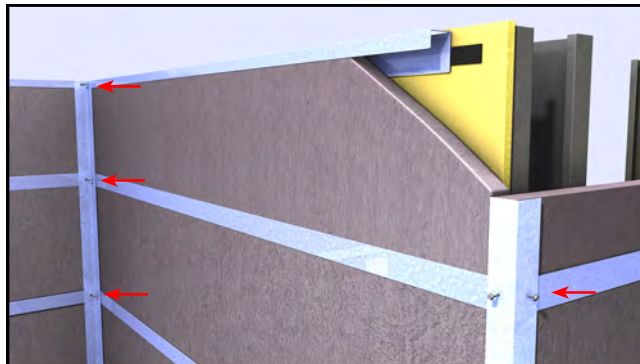
Repeat until head of wall is reached.



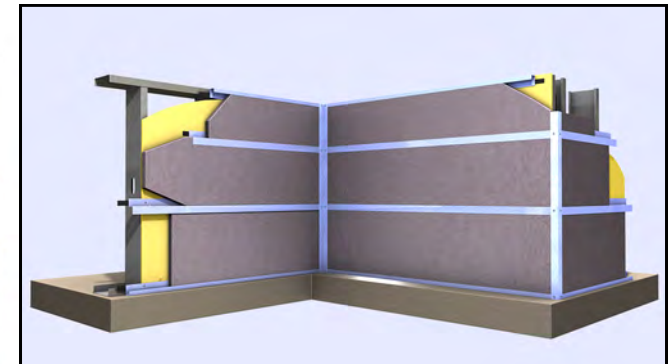
Before placing top row of insulation, install J-Track at head of wall, connecting at each stud.



Insert top row of rigid insulation into previously installed J-Track at head of wall.



Install ThermaFast® Corner Angle, attaching to J and Z tracks.



ThermaFast® Rigid Insulation Framing System