

# Exterior Wall Framing & Accessories ThermaFast® Continuous Rigid Insulation Framing System

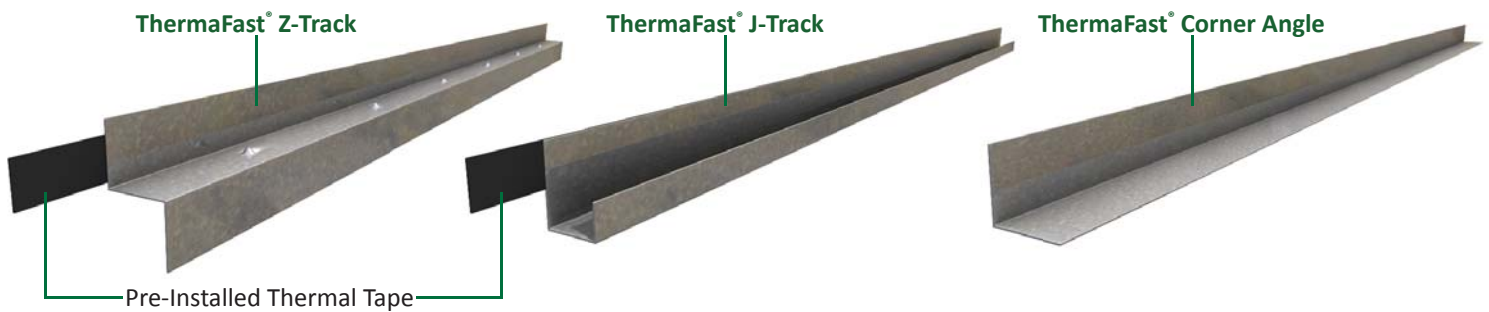
## Introduction

Recent changes in the IECC Energy Conservation Code and ASHRAE Standard 90.1 necessitate the installation of 1 to 4 inches of continuous rigid insulation layer on the outside surface of exterior metal stud walls. Existing building component systems lack sufficient accommodation for cladding assemblies, like cement board panels, siding, metal panels, EIFS, stucco, etc. since there is no viable means to attach to a stable substrate like plywood or gypsum sheathing over the thick rigid insulation layer other than long and unstable cantilevered screws.

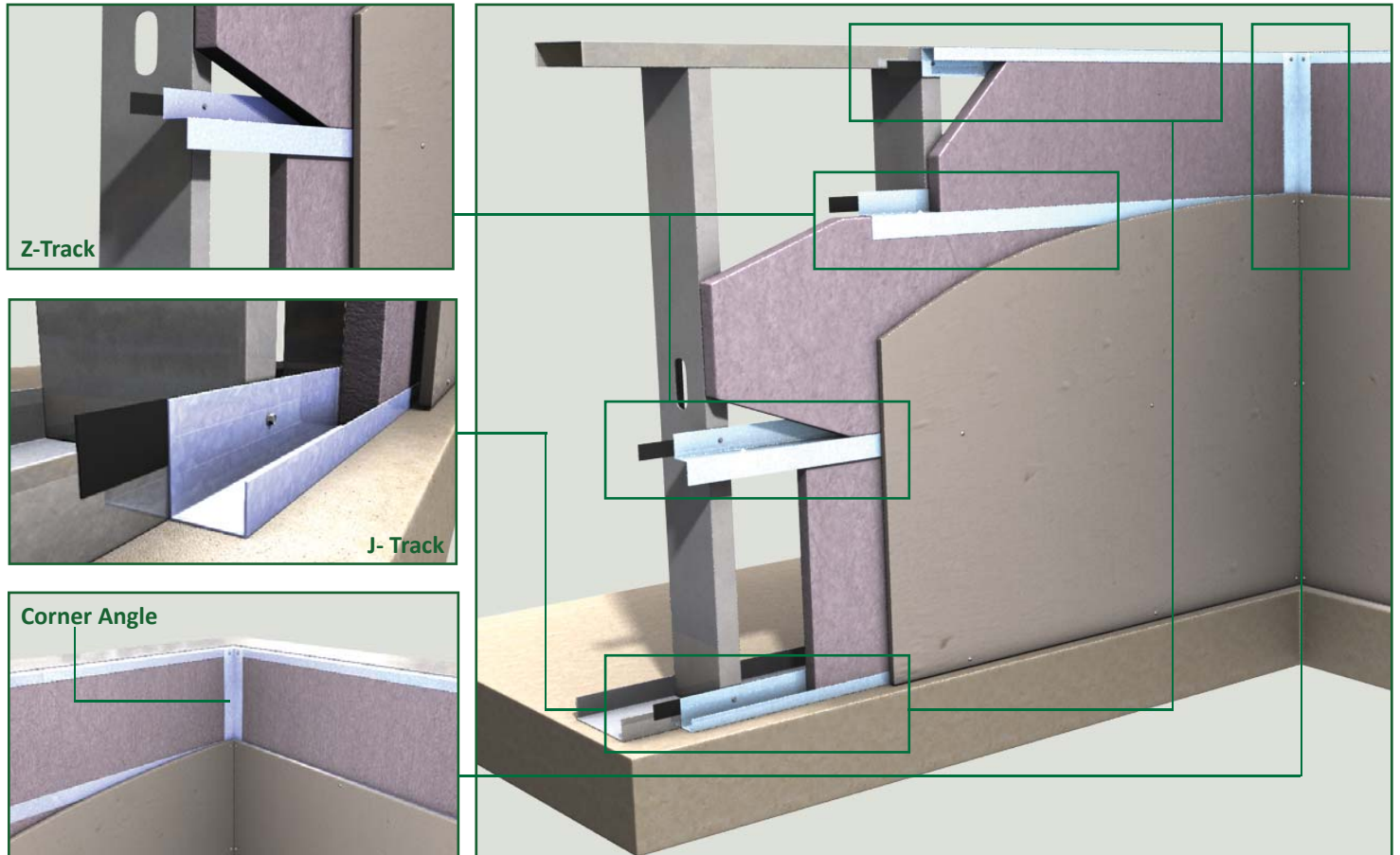
Over time, and lacking a product that addressed this need, Architects have either reduced or abandoned altogether the use of such cladding in their designs, waiting for the steel framing industry to provide a solution.

TSN's ThermaFast® Rigid Insulation Framing system is "The" solution. ThermaFast is an engineered installer-friendly set of steel framing tracks and angles designed to be an integral part of the continuous rigid insulation, and at the same time provide a stable component for direct substrate attachment.

## System Components



## System Configuration



# Exterior Wall Framing & Accessories ThermaFast® Continuous Rigid Insulation Framing System

Nomenclature

## 150ZT-54, 50 ksi

Rigid Foam Insulation Depth (in) x 100

Ex: 1.5" = 150

For all "CA" sections,  
this dimension is the leg length  
ex: 2" leg = 200

Style

Ex: ZT = Z-Track Section

Other designators are as follows:

JT = J-Track

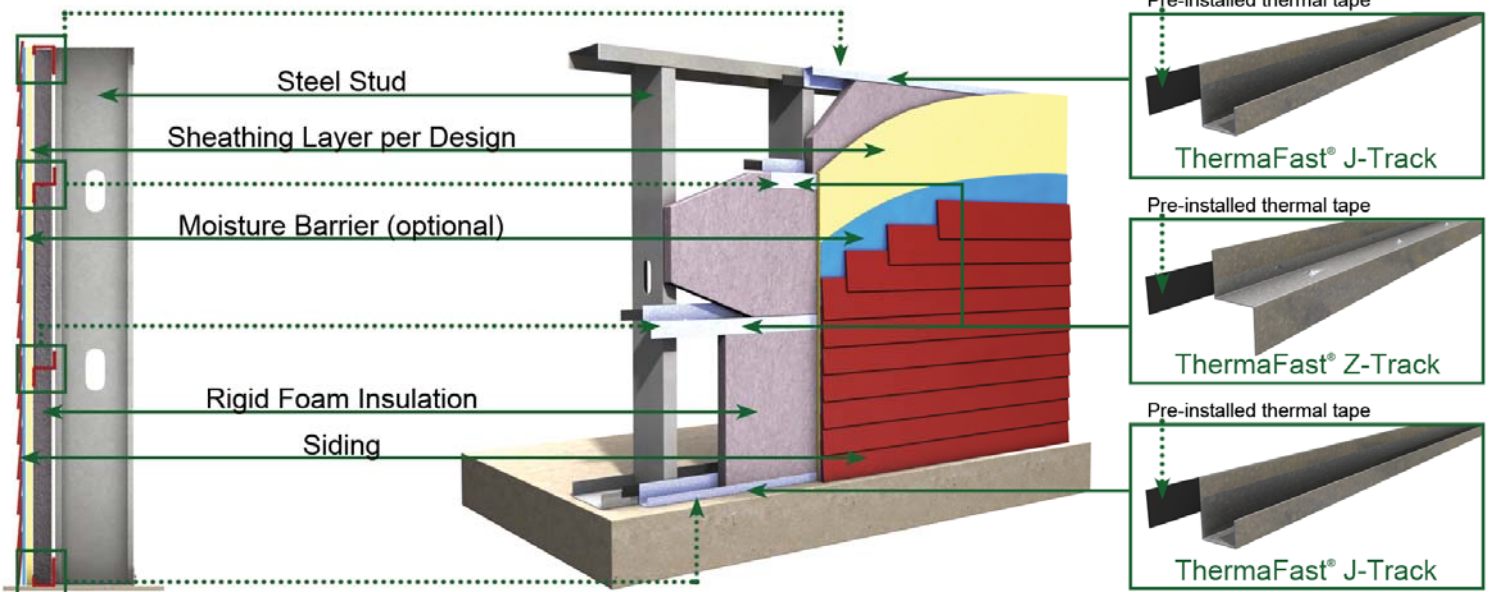
CA = Corner Angle

Material Thickness (mils)

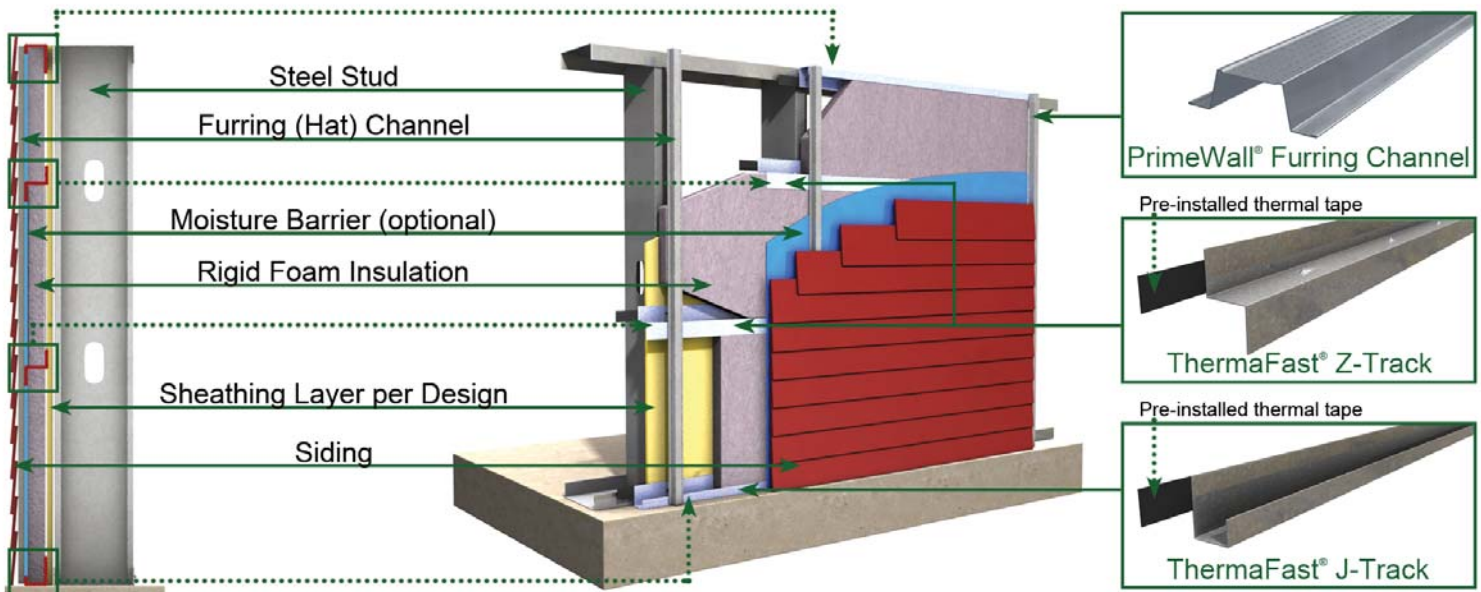
Ex: 0.054" = 54 mils (16ga)

Material Thickness is the minimum base  
metal thickness in mils, representing  
95% of the design thickness.

### Example Details\*



### Example Details - ThermaFast® used with Furring Channel



\* Refer to project specification and/or architectural sections for wall assembly details related to fire and acoustical performance as well as water resistance.