

StiffClip® LB

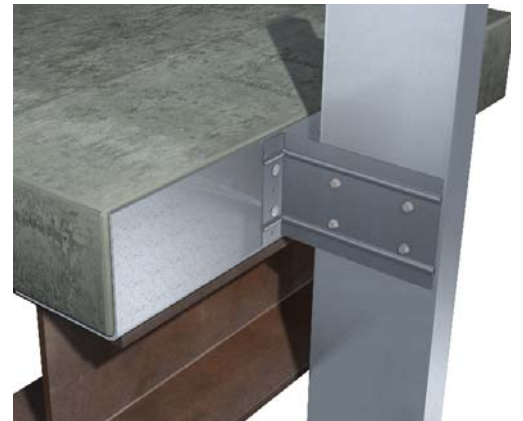
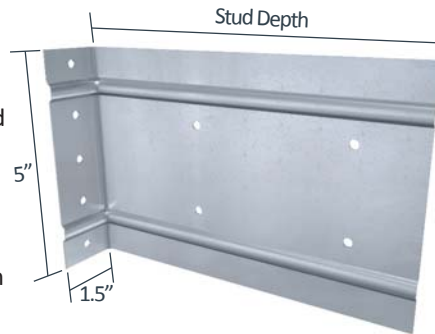
Spandrel Wall Bypass



Material Composition

ASTM A1003/A1003M Structural Grade 50 (340) Type H, ST50H (ST340H): 50ksi (340MPa) minimum yield strength, 65ksi (450MPa) minimum tensile strength, 68mil minimum thickness (14 gauge, 0.0713" design thickness) with ASTM A653/A653M G90 (Z275) hot dipped galvanized coating.

The attachment of StiffClip to the primary structure may be made with PAFs, screw/bolt anchors or weld and is dependent upon the base material (steel or concrete) and the design configuration.



StiffClip LB Allowable Loads

StiffClip® LB, Recommended Allowable Load (lbs): F1					StiffClip® LB, Recommended Allowable Load (lbs): F2								
Stud		LB362 & LB600	LB800 (Standard 2" Offset)	LB1000 & LB1200 (Standard 2" Offset)	Stud		LB362 & LB600			LB800 (Standard 2" Offset)		LB1000 & LB1200 (Standard 2" Offset)	
Thickness Mils (ga)	Yield Strength (ksi)	w/3 #12 Screws	w/3 #12 Screws	w/3 #12 Screws	Thickness Mils (ga)	Yield Strength (ksi)	w/2 #12 Screws	w/3 #12 Screws	w/4 #12 Screws	w/3 #12 Screws	w/4 #12 Screws	w/3 #12 Screws	w/4 #12 Screws
		Pattern 2	Pattern 4	Pattern 12			Pattern 1	Pattern 2	Pattern 3	Pattern 4	Pattern 5	Pattern 12	Pattern 13
33 (20)	33	190	190	190	33 (20)	33	376	477	752	535	752	550	752
33 (20)	50	275	275	275	33 (20)	50	544	689	1,089	773	1,089	795	1,062
43 (18)	33	248	248	248	43 (18)	33	560	709	1,120	796	1,120	819	1,062
43 (18)	50	359	322	359	43 (18)	50	810	1,025	1,620	1,150	1,620	1,062	1,062
54 (16)	33	312	322	312	54 (16)	33	788	988	1,576	1,120	1,576	1,062	1,062
54 (16)	50	450	322	450	54 (16)	50	1,138	1,441	1,954	1,617	1,954	1,062	1,062
68 (14)	50	568	322	532	68 (14)	50	1,610	1,954	1,954	1,954	1,954	1,062	1,062
97 (12)	50	768	322	532	97 (12)	50	1,698	1,954	1,954	1,954	1,954	1,062	1,062
Max Allowable Clip Load		768	322	532	Max Allowable Clip Load		1,954	1,954	1,954	1,954	1,954	1,062	1,062

StiffClip® LB, Recommended Allowable Load (lbs): F3														
Stud		LB362			LB600 (Standard 1" Offset)			LB800 (Standard 2" Offset)				LB800 (4" Offset)		
Thickness Mils (ga)	Yield Strength (ksi)	w/2 #12 Screws	w/3 #12 Screws	w/4 #12 Screws	w/2 #12 Screws	w/3 #12 Screws	w/4 #12 Screws	w/3 #12 Screws	w/4 #12 Screws	w/6 #12 Screws	w/10 #12 Screws	w/4 #12 Screws	w/6 #12 Screws	w/8 #12 Screws
		Pattern 1	Pattern 2	Pattern 3	Pattern 1	Pattern 2	Pattern 3	Pattern 4	Pattern 5	Pattern 6	Pattern 7	Pattern 8	Pattern 9	Pattern 10
33 (20)	33	235	350	468	216	373	431	320	370	534	793	259	331	417
33 (20)	50	340	506	678	313	539	623	463	536	773	1,149	376	479	604
43 (18)	33	350	522	697	322	555	641	477	552	795	1,182	386	493	622
43 (18)	50	506	753	1,009	466	802	928	689	798	1,150	1,710	559	713	899
54 (16)	33	493	733	981	453	781	902	670	776	1,119	1,663	544	693	875
54 (16)	50	711	1,059	1,417	654	1,128	1,303	968	1,121	1,616	2,401	785	1,001	1,263
68 (14)	50	1,006	1,498	2,004	926	1,594	1,843	1,369	1,586	2,286	3,397	1,111	1,417	1,561
97 (12)	50	1,061	1,579	2,114	976	1,681	1,923	1,443	1,673	2,411	3,583	1,172	1,494	1,561
Max Allowable Clip Load		2,658	2,658	2,658	1,923	1,923	1,923	3,863	3,863	3,863	3,863	1,561	1,561	1,561

****StiffClip LB Allowable Load tables and important notes continued on next page.**

Nomenclature

StiffClip LB is available for various stud depths. To specify, multiply stud depth by 100.

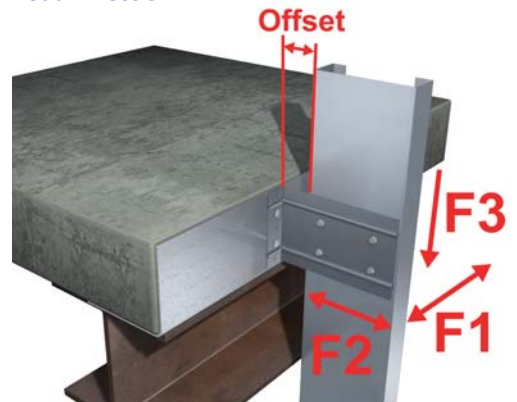
Example: 6" stud depth
Designate: StiffClip® LB600

StiffClip® LB, Recommended Allowable Load (lbs): F3										
Stud		LB1000 (Standard 2" Offset)			LB1200 (Standard 2" Offset)			LB1000 (4" Offset)		
Thickness Mils (ga)	Yield Strength (ksi)	w/2 #12 Screws	w/3 #12 Screws	w/4 #12 Screws	w/2 #12 Screws	w/3 #12 Screws	w/4 #12 Screws	w/4 #12 Screws	w/6 #12 Screws	w/10 #12 Screws
		Pattern 11	Pattern 12	Pattern 13	Pattern 11	Pattern 12	Pattern 13	Pattern 14	Pattern 15	Pattern 16
33 (20)	33	203	364	406	211	381	421	290	410	602
33 (20)	50	294	525	588	305	550	610	419	593	871
43 (18)	33	302	541	605	314	566	627	431	610	896
43 (18)	50	438	782	875	454	818	907	624	883	1,192
54 (16)	33	426	761	851	441	796	883	607	859	1,192
54 (16)	50	615	1,099	1,229	637	1,150	1,275	876	1,192	1,192
68 (14)	50	869	1,554	1,739	902	1,627	1,803	1,192	1,192	1,192
97 (12)	50	917	1,639	1,793	951	1,715	1,899	1,192	1,192	1,192
Max Allowable Clip Load		1,793	1,793	1,793	1,899	1,899	1,899	1,192	1,192	1,192

Notes:

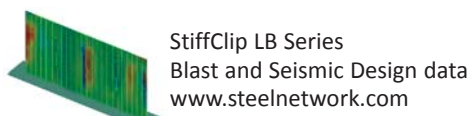
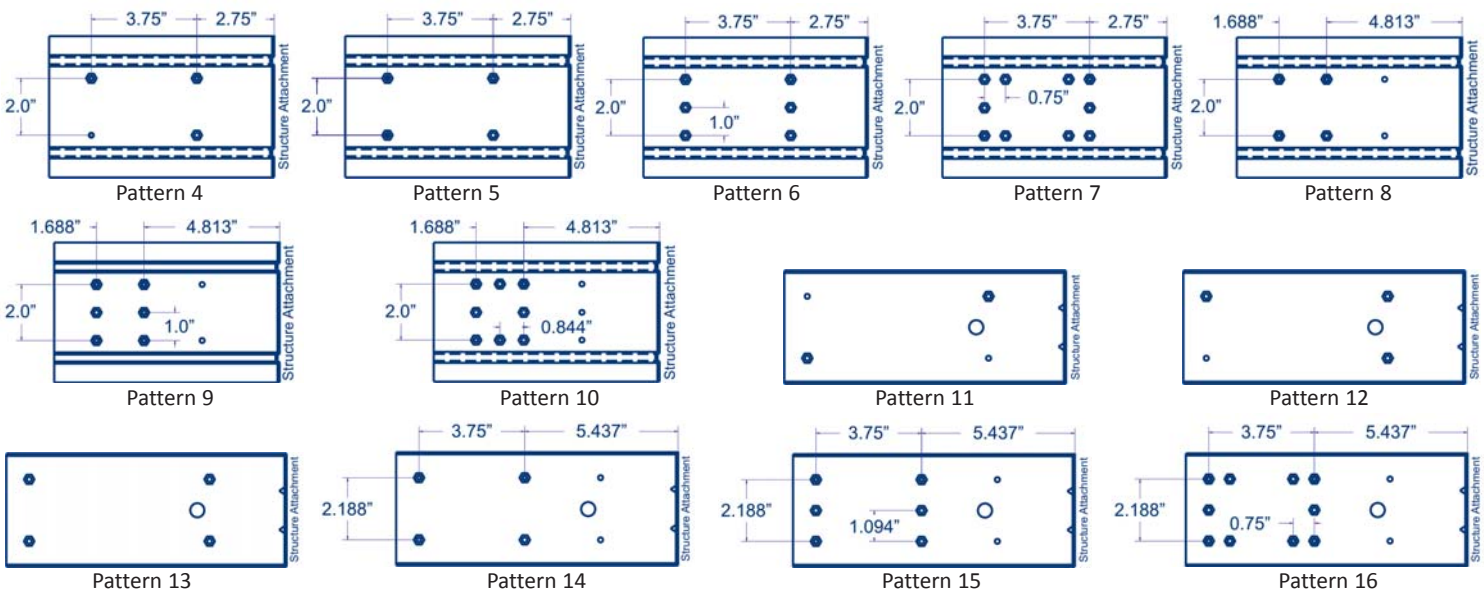
- Allowable load tables incorporate eccentric loading of fasteners. Values with a welded connection may increase.
- StiffClip LB resists horizontal and vertical loads.
- Allowable loads have not been increased for wind, seismic, or other factors.
- Loads listed reflect force in a single direction. When multiple loads react on the connection, it is the responsibility of the designer to check the interaction of forces.
- Torsional effects are considered on screw group for F2 & F3 allowable loads. It is assumed that half of the torsional moment is taken by the connection to the structure and half is taken by the connection to the stud.
- Design loads consider loads on the clip and #12 screw fasteners to the stud web.
- Strengthening ribs are present in 3-5/8", 6", and 8" sizes. StiffClip LB's 10" and 12" sizes contain 1/2" return lips on the top and bottom of the leg attaching to the stud for increased stiffness.

Load Direction



Screw Patterns

****Important Consideration:** Pattern diagrams indicate fastener placement only. Each standard StiffClip LB product comes with 4 guide holes to stud.



** For more information or to review a copy of this report, please visit our website at <http://www.steelnetwork.com/Site/TechnicalData>