

VertiClip® Splice

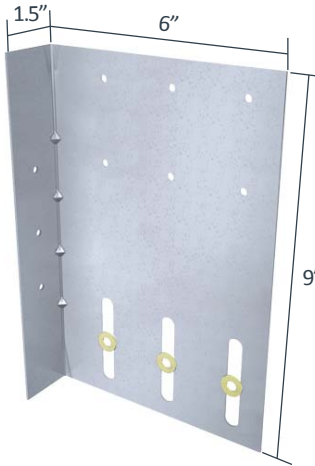
Multi-Stud Bypass



Material Composition

ASTM A1003/A1003M Structural Grade 50 (340) Type H, ST50H (ST340H): 50ksi (340MPa) minimum yield strength, 65ksi (450MPa) minimum tensile strength, 68mil minimum thickness (14 gauge, 0.0713" design thickness) with ASTM A653/A653M G90 (Z275) hot dipped galvanized coating.

The attachment of VertiClip to the primary structure may be made with PAFs, screw/bolt anchors or weld and is dependent upon the base material (steel or concrete) and the design configuration.



US Patent # 5,906,080

VertiClip Splice Allowable Loads

VertiClip® Splice, Recommended Allowable Load (lbs): F2 & F3									
Stud		F2 Load Direction					F3 Load Direction		
Thickness Mils (ga)	Yield Strength (ksi)	Qty #12 screws Upper Half (Listed 1st) / Qty #12 screws Lower Half (Listed 2nd)					#12 Screws in Upper Half		
		2 screws / 2 screws	4 screws / 2 screws	4 screws / 3 screws	6 screws / 2 screws	6 screws / 3 screws	2 screws	4 screws	6 screws
33 (20)	33	754	1,041	1,229	1,041	1,229	216	431	562
33 (20)	50	1,089	1,208	1,328	1,208	1,328	313	623	813
43 (18)	33	1,122	1,225	1,328	1,225	1,328	322	642	837
43 (18)	50	1,328	1,328	1,328	1,328	1,328	465	928	1,209
54 (16)	33	1,328	1,328	1,328	1,328	1,328	453	903	1,177
54 (16)	50	1,328	1,328	1,328	1,328	1,328	654	1,304	1,700
68 (14)	50	1,328	1,328	1,328	1,328	1,328	925	1,844	2,404
97 (12)	50	1,328	1,328	1,328	1,328	1,328	976	1,944	2,432
Maximum Allowable Clip Load		1,328	1,328	1,328	1,328	1,328	2,432	2,432	2,432

Notes:

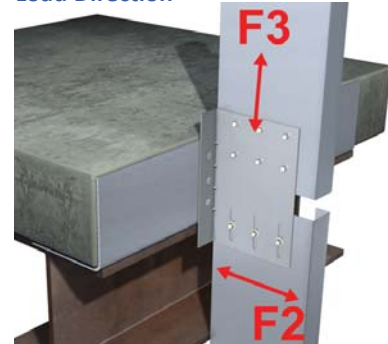
- Fasten within 3/4" from the angle heel centerline of the 1/2" leg.
- Guide holes for attachment to structure are 0.172" in diameter.
- Total vertical deflection of up to 2" (1" up and 1" down). Deflection requirements greater than 1" up and down are available.
- Allowable loads have not been increased for wind, seismic, or other factors.
- Torsional effects are considered on screw group for F2 & F3 allowable loads. It is assumed that half of the torsional moment is taken by the connection to the structure and half is taken by the connection to the stud.

Nomenclature

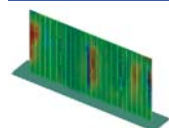
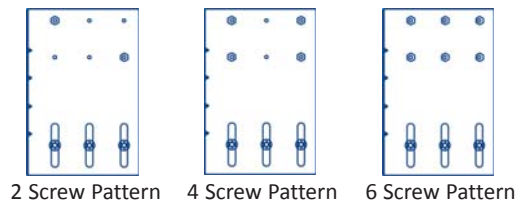
VertiClip Splice is available in one size for use with 6" stud depths and is designated VertiClip® Splice

* Clip shown is a left version of VertiClip Splice. Right side versions can be made as a custom part.

Load Direction



Screw Patterns



VertiClip Splice Series
Blast and Seismic Design data
www.steelnetwork.com

** For more information or to review a copy of this report, please visit our website at <http://www.steelnetwork.com/Site/TechnicalData>