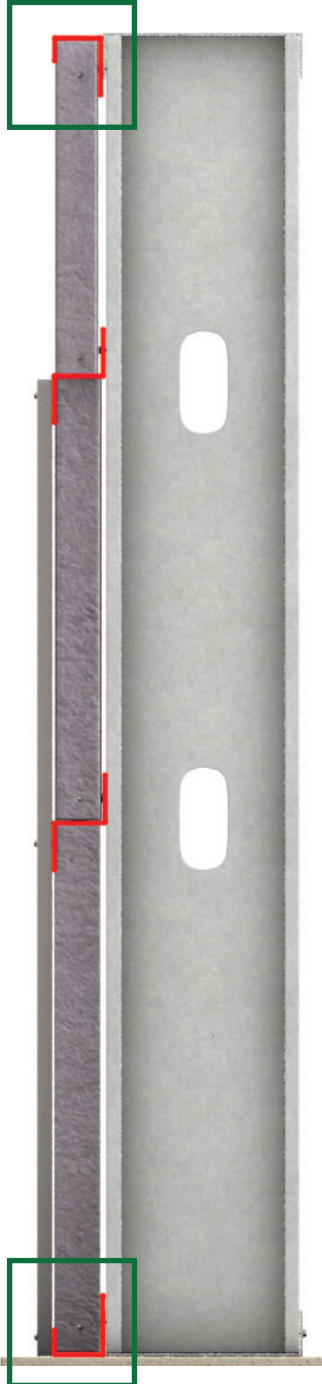
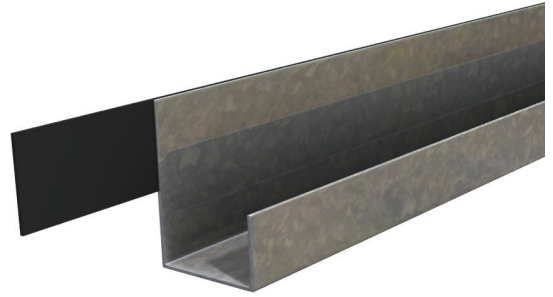
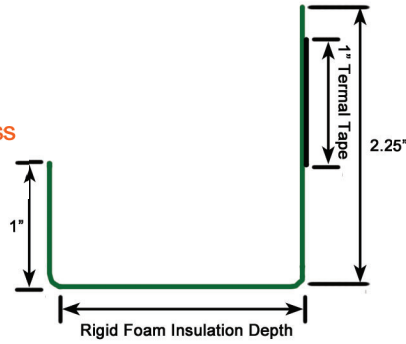
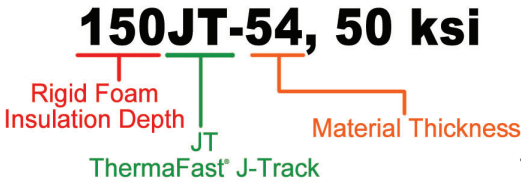


Exterior Wall Framing & Accessories

ThermaFast® J-Track Product Profile



Material Properties

Metal: ASTM A1003/A1003M Structural Grade 50 (340) Type H, ST50H (ST340H): 50ksi (340MPa) minimum yield strength, 65ksi(450MPa) minimum tensile strength, with ASTM A653/A653M G90 (Z275) hot dipped galvanized coating. Available in 33mil minimum thickness (20 gauge, 0.0346" design thickness) or 54mil minimum thickness (16 gauge, 0.0566" design thickness).

Thermal Tape: Thickness 1/16", Density 15 lbs/ft³ (ASTM D-1667), Thermal Conductivity k-factor 0.3 (ASTM C-518)

ThermaFast® J-Track Product Profile								
Section	Leg Length	Rigid Foam Insulation Depth	Return Lip	Gauge	Design Thickness	Min Steel Thickness	Inside Bend Radius	Unit Weight
	(in)	(in)	(in)	(ga)	(in)	(in)	(R)	(lbs/ft)
100JT-33, 50ksi	2.25	1.0	1.0	20	0.0346	0.0329	0.0764	0.49
150JT-33, 50ksi		1.5						0.54
200JT-33, 50ksi		2.0						0.60
300JT-33, 50ksi		3.0						0.71
400JT-33, 50ksi		4.0						0.82
100JT-54, 50ksi	2.25	1.0	1.0	16	0.0566	0.0538	0.0849	0.80
150JT-54, 50ksi		1.5						0.89
200JT-54, 50ksi		2.0						0.99
300JT-54, 50ksi		3.0						1.17
400JT-54, 50ksi		4.0						1.35

ThermaFast® J-Track Section Properties		
Section	M _{xa}	M _{ya}
	(kips-in)	(kips-in)
100JT-33, 50ksi	0.07	0.11
150JT-33, 50ksi	0.10	0.27
200JT-33, 50ksi	0.10	0.47
300JT-33, 50ksi	0.12	0.86
400JT-33, 50ksi	0.17	1.21
100JT-54, 50ksi	0.26	0.34
150JT-54, 50ksi	0.33	0.79
200JT-54, 50ksi	0.37	1.46
300JT-54, 50ksi	0.47	3.07
400JT-54, 50ksi	0.47	4.62

Table Notes:

- M_{xa} is the ASD moment capacity in the gravity load direction based on 24" o.c. fastening to stud max.
- M_{ya} is the ASD moment capacity in the wind load direction based on 24" o.c. fastening to stud max.
- Attach track with minimum (1) #10-16 self-drilling screws to each stud. (2) screws may be required for high design wind pressures (higher than 30 psf service level)
- Refer to project specification and/or architectural sections for wall assembly details related to fire and acoustical performance as well as water resistance.

ThermaFast J-Track is installed first, at base and head of wall.