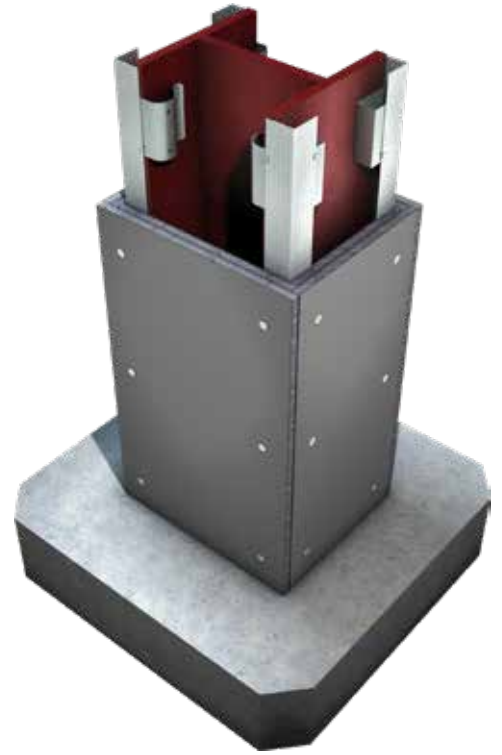
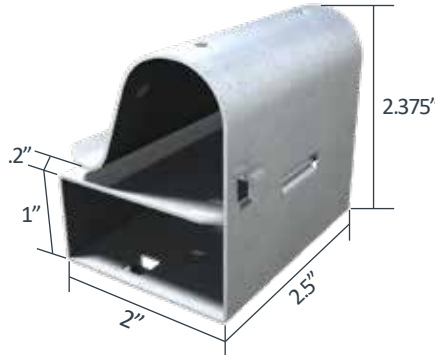


GripClip®

Column/Beam Connector

Material Composition

ASTM A1003/A1003M Structural Grade 50, Type H, ST50H (ST340H): 50ksi (340MPa) minimum yield strength, 65ksi (450MPa) minimum tensile strength, 33mil minimum thickness (20 gauge, 0.0346" design thickness) with ASTM A653/A653M G90 (Z275) hot dipped galvanized coating.

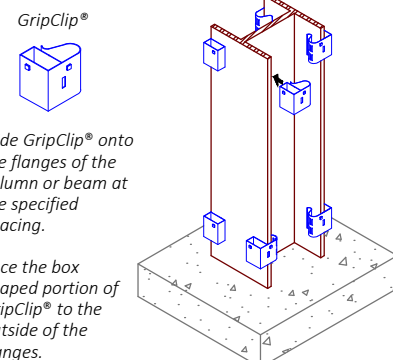
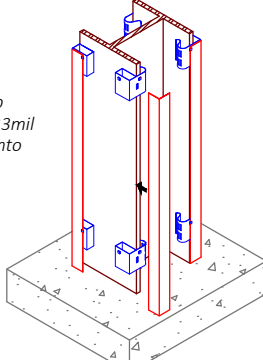
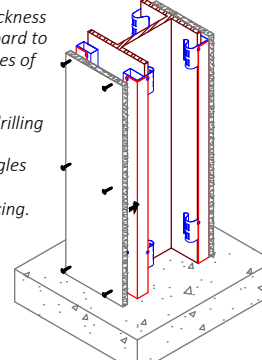
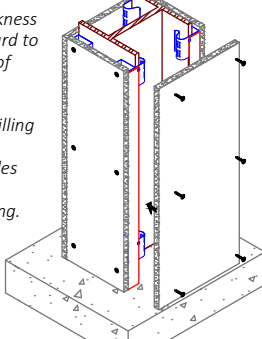
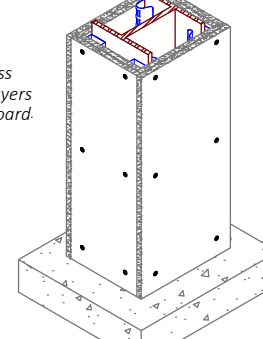


Nomenclature

Standard GripClip is shown above with maximum 'grip' of 7/8". Contact TSN Sales and Engineering for increased 'grip' sizes.

Patent # 8,132,383

Example Details

 <p>GripClip®</p> <p>Slide GripClip® onto the flanges of the column or beam at the specified spacing.</p> <p>Face the box shaped portion of GripClip® to the outside of the flanges.</p>	<p>If required, snap 1-1/2"x1-1/2"-33mil or other angle into GripClip® tabs.</p> 	<p>Trim specified thickness of gypsum wallboard to size for flange sides of column or beam.</p> <p>Attach with self drilling screws through 1-1/2"x1-1/2" angles and GripClip® at the specified spacing.</p> 												
<p>Trim specified thickness of gypsum wallboard to size for web sides of column or beam.</p> <p>Attach with self drilling screws through 1-1/2"x1-1/2" angles and GripClip® at the specified spacing.</p> 	<p>Finish with the specified thickness and number of layers of gypsum wallboard.</p> 	<p>Cross-Section of Finished Assembly:</p> <table border="1"> <thead> <tr> <th>Item</th> <th>Description</th> </tr> </thead> <tbody> <tr> <td>1.</td> <td>GripClip®</td> </tr> <tr> <td>2.</td> <td>Column or beam</td> </tr> <tr> <td>3.</td> <td>Gypsum wallboard (Thickness and number of layers as specified)</td> </tr> <tr> <td>4.</td> <td>Self-drilling screws</td> </tr> <tr> <td>5.</td> <td>1-1/2"x1-1/2" Angle</td> </tr> </tbody> </table> <p>For Installation, Technical, or Submittal questions, contact TSN at (888) 474-4876 or email us at support@steelnetwork.com</p> <p>Visit www.steelnetwork.com and discover the value of each TSN solution.</p>	Item	Description	1.	GripClip®	2.	Column or beam	3.	Gypsum wallboard (Thickness and number of layers as specified)	4.	Self-drilling screws	5.	1-1/2"x1-1/2" Angle
Item	Description													
1.	GripClip®													
2.	Column or beam													
3.	Gypsum wallboard (Thickness and number of layers as specified)													
4.	Self-drilling screws													
5.	1-1/2"x1-1/2" Angle													